

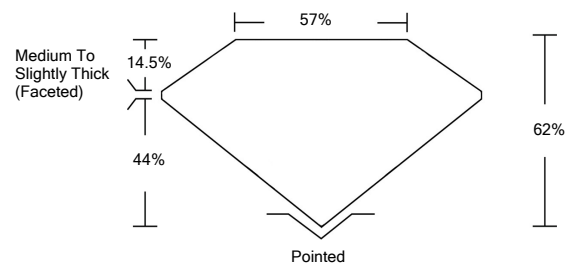


ELECTRONIC COPY

LABORATORY GROWN DIAMOND REPORT

LG512232196

PROPORTIONS



GRADING SCALES

COLOR GRADING SCALE	CL	NC	FT	VLT	LT	
	COLORLESS D-F	NEAR COLORLESS G-J	FAINT K-M	VERY LIGHT N-R	LIGHT S-Z	
CLARITY (10x) GRADING SCALE	FL	IF	VVS	VS	SI	I
	FLAWLESS INTERNALLY FLAWLESS	VERY VERY SLIGHTLY INCLUDED	VERY SLIGHTLY INCLUDED	SLIGHTLY INCLUDED	INCLUDED	

February 1, 2022

IGI Report Number **LG512232196**

Description **LABORATORY GROWN DIAMOND**

Shape and Cutting Style **OVAL BRILLIANT**

Measurements **10.14 X 7.39 X 4.58 MM**

GRADING RESULTS

Carat Weight **2.13 CARATS**

Color Grade **F**

Clarity Grade **VS 2**

February 1, 2022

IGI Report Number **LG512232196**

Description **LABORATORY GROWN DIAMOND**

Shape and Cutting Style **OVAL BRILLIANT**

Measurements **10.14 X 7.39 X 4.58 MM**

GRADING RESULTS

Carat Weight **2.13 CARATS**

Color Grade **F**

Clarity Grade **VS 2**

ADDITIONAL GRADING INFORMATION

Polish **EXCELLENT**

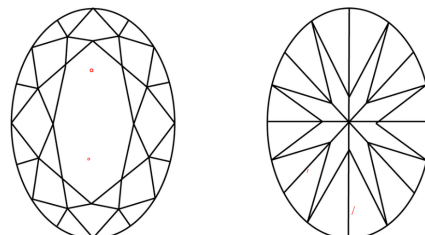
Symmetry **EXCELLENT**

Fluorescence **NONE**

Inscription(s) **LABGROWN IGI LG512232196**

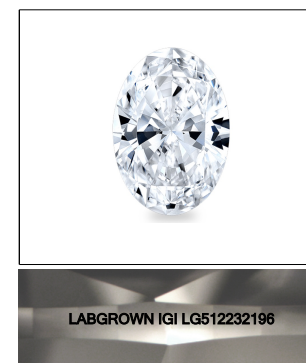
Comments: This Laboratory Grown Diamond was created by Chemical Vapor Deposition (CVD) growth process and may include post-growth treatment. Type IIa

CLARITY CHARACTERISTICS

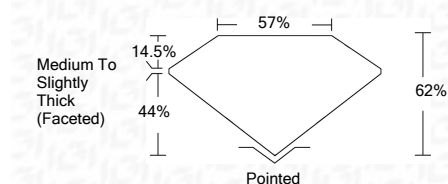


KEY TO SYMBOLS

Red symbols indicate internal characteristics.
Green symbols indicate external characteristics.



LASERSCRIBESM
Sample Image Used



ADDITIONAL GRADING INFORMATION

Polish **EXCELLENT**

Symmetry **EXCELLENT**

Fluorescence **NONE**

Inscription(s) **LABGROWN IGI LG512232196**

Comments: This Laboratory Grown Diamond was created by Chemical Vapor Deposition (CVD) growth process and may include post-growth treatment. Type IIa



February 1, 2022	IGI Report No. LG512232196	2.13 CARATS	F
IGI Report No. LG512232196	OVAL BRILLIANT	10.14 X 7.39 X 4.58 MM	VS 2
Carat Weight	2.13 CARATS	10.14 X 7.39 X 4.58 MM	62%
Color Grade	F	10.14 X 7.39 X 4.58 MM	57%
Clarity Grade	VS 2	10.14 X 7.39 X 4.58 MM	Medium To Slightly Thick (Faceted)
Depth	62%	10.14 X 7.39 X 4.58 MM	Pointed
Table	57%	10.14 X 7.39 X 4.58 MM	EXCELLENT
Girdle	Medium To Slightly Thick (Faceted)	10.14 X 7.39 X 4.58 MM	EXCELLENT
Culet	Pointed	10.14 X 7.39 X 4.58 MM	NONE
Polish	EXCELLENT	10.14 X 7.39 X 4.58 MM	LABGROWN IGI LG512232196
Symmetry	EXCELLENT	10.14 X 7.39 X 4.58 MM	Comments:
Fluorescence	NONE	10.14 X 7.39 X 4.58 MM	This Laboratory Grown Diamond was created by Chemical Vapor Deposition (CVD) growth process and may include post-growth treatment. Type IIa
Inscription(s)	LABGROWN IGI LG512232196	10.14 X 7.39 X 4.58 MM	